



Creative ITC

MULTI AWARD WINNING
CLOUD SERVICES PROVIDER

SERVER TRANSFORMATION

Keeping your business and
IT fully secure and compliant



Safely and securely dodge digital disruption

Microsoft [withdrawing support](#) for Windows Server 2012 and Windows Server 2012 R2 might leave many organisations staring down the barrel of a raised risk landscape. Doing nothing and continuing to use the platform past end-of-life (October 2023) without security updates and bug fixes would create a larger attack surface. Hackers know this and are highly adept at targeting systems running past software support with unpatched vulnerabilities.

Using out-of-date operating systems can also result in compliance violations under Cyber Essentials, and lack of ISO Accreditations as well as data protection and privacy regulations such as GDPR and PCI DSS. That could lead to fines, penalties, loss of trading licenses and risk of data breaches such as ransomware. Further, incidents involving outdated operating systems, as it would be with Windows 2012, may well invalidate cyber insurance policies.

Weighing-up your options

Organisations coming under fire aren't just those with limited internal IT resources that rely on Microsoft for troubleshooting and technical assistance. Large organisations might face the unwelcome prospect of pulling technical teams away from business-critical projects to deal with server migration issues.

1.



Kick the can down the road

If you prefer to keep legacy apps and systems on-prem, Microsoft Extended Security Updates (ESUs) offer security updates until 13th October 2026. The ESU route can quickly rack-up costs and doesn't include non-security updates or tech support.

Plus, you'll be in the same position when the ESUs expire.

2.



Go all-in with cloud

Migrating on-prem servers to Microsoft Azure means you'll not only stay compliant with security updates (at no extra charge for some time), but also enjoy extra benefits.

Such as adopting more cloud services when you're ready, modernising SQL servers and banking licence savings unique to Azure (hybrid benefit).

3.

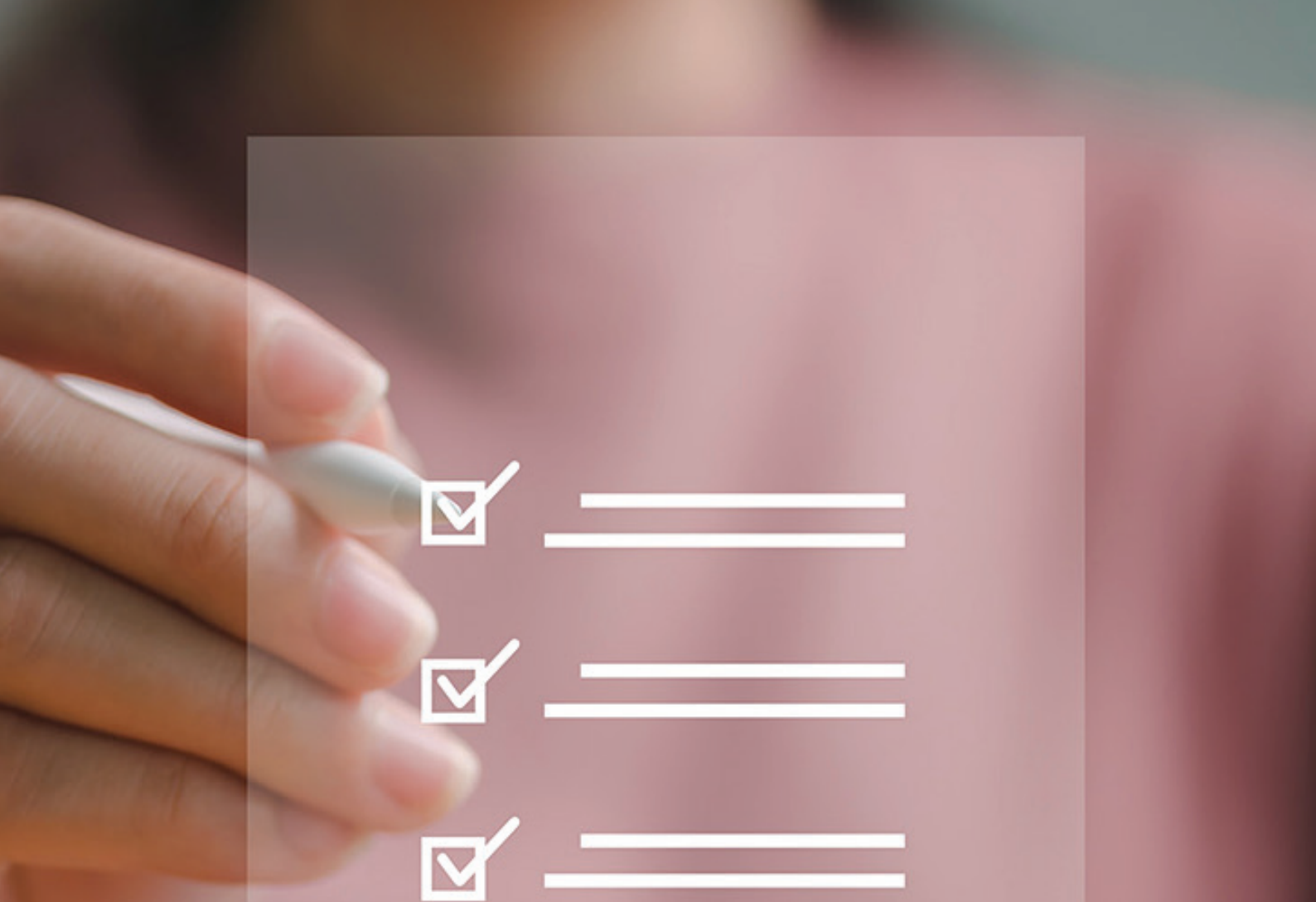


Update on-prem servers

The final option is to build new servers with a new supported version of Windows Server and migrate your applications and data. A significant undertaking that will require serious funding and resourcing, it may also take several months, leaving the business exposed in the meantime.

Costs associated with [Microsoft in-place upgrades](#) are another point to keep in mind. They allow you to go from an older operating system to a newer one, while keeping your settings, server roles, and data intact. For example, Windows Server 2012 R2 can upgrade in-place to Windows Server 2019.

However, if you're running Windows Server 2008 or Windows Server 2008 R2, there's no direct upgrade path to Windows Server 2016 or later. Instead, you must first upgrade to Windows Server 2012 R2, then step up to Windows Server 2016 or Windows Server 2019.



With you every step of the way

The next challenge is migrating your existing data, applications, and configurations from Windows Server 2008/2012 to your chosen platform all while ensuring continuity with ongoing BAU IT initiatives

That's where Creative ITC comes in. Our Server Transformation Service is specifically designed with a tried-and-tested methodology to accelerate and de-risk server transformation projects.

For one Creative client this meant completing their Windows Server 2012 migration within 125 days, compared to 500 days using constrained inhouse resources to upgrade 1000 servers.

With highly skilled specialists at your call throughout, we'll help meticulously plan and execute your move, minimising downtime and data loss while preserving data integrity.

Key components of the Server Transformation Service include:



Preparation and readiness

As part of our service, Creative-ITC will conduct an initial e-discovery exercise to create a precise inventory of your current server infrastructure. This encompasses services and applications operating on Windows Server 2012, assessing potential impacts and establishing the foundation for your migration strategy. Our process involves identifying application owners and collaboratively determining upgrade schedules to minimize business interruptions.



Beta testing

Following that, proficient Creative technicians will thoroughly test the migration from Windows 2012 on virtual machines (VMs). This process involves resolving any potential issues and ensuring that all services and applications function as intended within the new environment. Additionally, they will assess preparedness for backups and address compatibility concerns with hardware, software, and configurations. Furthermore, security measures will be evaluated to detect and rectify any potential vulnerabilities.



Full migration and transfer

After successful beta testing, we will assist in supervising the complete deployment of your new Windows 2012 to Windows 2019/Windows 2022 in the production environment. This entails conducting user acceptance testing, providing migration process documentation, and offering training to acquaint IT staff with the new Windows environment and any procedural adjustments. Typically, migration requires approximately 8 hours per server.



Creative ITC

Why Creative

We'll look after your apps and data as if they were our own, adhering to proven processes and best practices like ISO 27001, the international information security standard. Our ratio of technicians to office staff is 4:1, significantly above our peers. Each specialist holds, or is close to attaining, the very highest qualifications in their field.

That's why Creative is a trusted partner for some of the world's biggest brands, involved in many of the largest IoT, cloud and digital transformations. It's also why we have one of the highest customer retention rates in the industry.

Benefits

Creative's Server Transformation Service enables you to:



Accelerate Windows Server 2019/2022 deployment times



Do so with complete safety



Take account of legacy apps



Reduce risk of data loss or corruption



Protect against new environment security vulnerabilities



Rigorously test performance under different loads and conditions



Cover documentation and training requirements

Discover how

To arrange a free, no-strings
consultation please contact:

enquiries@creative-itc.com

creative-itc.com

+44 (0)20 7682 2820



Creative ITC

MULTI AWARD WINNING
CLOUD SERVICES PROVIDER

DELL EMC
PARTNER
GOLD



NetApp
Platinum Partner



vmware
PARTNER
ENTERPRISE
SOLUTION PROVIDER

solarwinds
AUTHORIZED PARTNER

